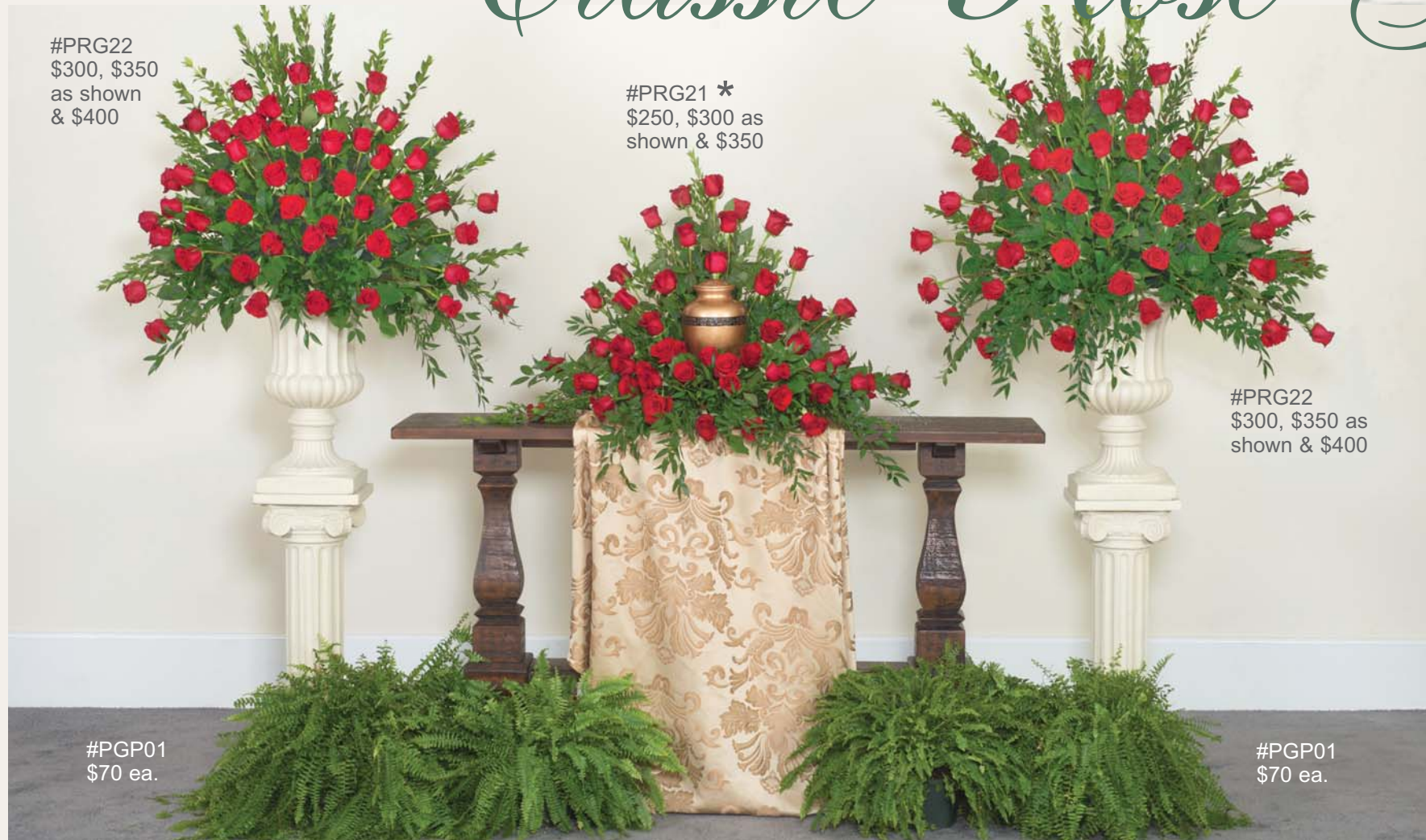




*Floral
Tributes
for
Cremations*

Phillip's

Classic Rose Garden



#PRG22
\$300, \$350
as shown
& \$400

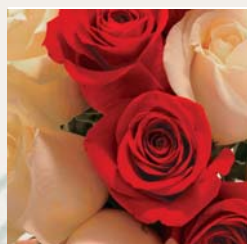
#PRG21 *
\$250, \$300 as
shown & \$350

#PRG22
\$300, \$350 as
shown & \$400

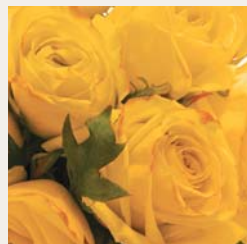
#PGP01
\$70 ea.

#PGP01
\$70 ea.

#PRG09 *
\$300



Red and White



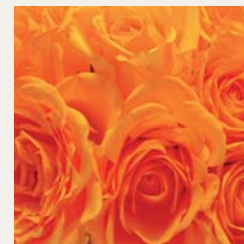
Yellow Roses



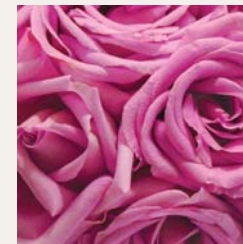
White Roses



Pink Roses



Orange Roses



Lavender Roses
Call for Availability

Rose Color Palettes

#PRG23 *
Seven-Piece Setting Above
\$1,130, \$1,280 as shown & \$1,430

PLEASE NOTE: For deliveries **Jan. 25 - Feb. 20**, the prices of rose items on this page **increase 20%** due to normal supply and demand near Valentine's.

* = Please indicate whether for a **cremation urn** or **framed photo**, and provide the approximate dimensions.

Some items may vary due to availability. Columns, urns, and cremation urns are NOT included, as they are normally available from the funeral provider. Applicable tax and delivery additional. Please order two to three days in advance if possible (excluding Sundays and legal holidays) and no later than eight (8) business hours prior to delivery, or a rush design and delivery surcharge will apply. Floral services by Phillip's Flowers. Photos copyright protected.

Modern Rose Garden



#PRG26
\$200, \$250 as
shown & \$300

#PRG27
\$75

#PRG25 *
\$200, \$250 as
shown, & \$300
(for the pair)

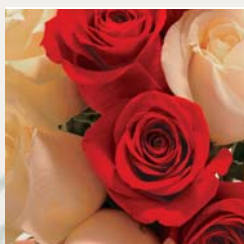
#PRG27
\$75

#PRG26
\$200, \$250 as
shown & \$300

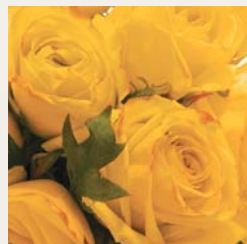
#PGP01
\$70 ea.

#PGP01
\$70 ea.

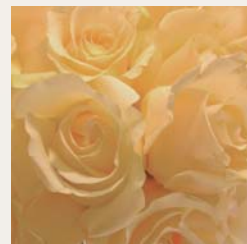
#PRG28 *
Two-Piece Simple Setting
\$150 as shown, \$200 & \$250
(for the pair)



Red and White



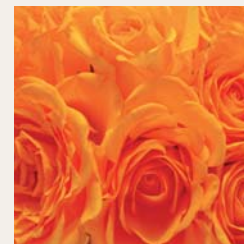
Yellow Roses



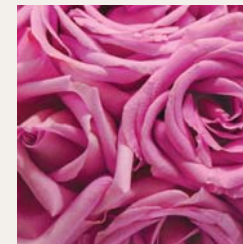
White Roses



Red Roses



Orange Roses



Lavender Roses
Call for Availability

Rose Color Palettes

#PRG29 *

Complete Ten-Piece Setting Above
\$1,030, \$1,180 as shown & \$1,330

For deliveries **Jan. 25 - Feb. 20**, the prices of floral items on
this page **increase 20%** due to normal supply and demand
near Valentine's.

* = Please indicate whether for a **cremation urn** or **framed photo**, and provide the approximate dimensions.

Some items may vary due to availability. Columns, urns, and cremation urns are NOT included, as they are normally available from the funeral provider. Applicable tax and delivery additional. Please order two to three days in advance if possible (excluding Sundays and legal holidays) and no later than eight (8) business hours prior to delivery, or a rush design and delivery surcharge will apply. Floral services by Phillip's Flowers. Photos copyright protected.

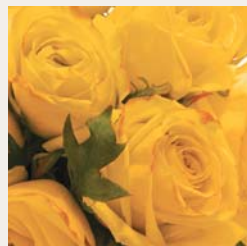
Roses and Blossoms



#PRB23 *
\$250, \$300 as shown & \$350



Red Roses



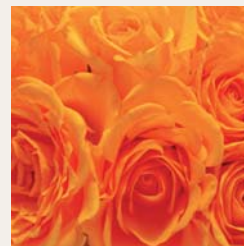
Yellow Roses



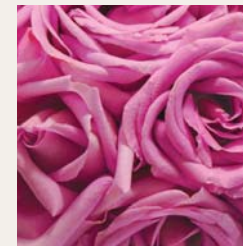
White Roses



Pink Roses



Orange Roses



Lavender Roses
Call for Availability

Rose Color Palettes

#PRB24 *
Five-Piece Setting Above
\$840, \$940 as shown & \$1,040

For deliveries **Jan. 25 - Feb. 20**, the prices of floral items on this page **increase 10%** due to normal supply and demand near Valentine's.

* = Please indicate whether for a **cremation urn** or **framed photo**, and provide the approximate dimensions.

Some items may vary due to availability. Columns, urns, and cremation urns are NOT included, as they are normally available from the funeral provider. Applicable tax and delivery additional. Please order two to three days in advance if possible (excluding Sundays and legal holidays) and no later than eight (8) business hours prior to delivery, or a rush design and delivery surcharge will apply. Floral services by Phillip's Flowers. Photos copyright protected.

Garden Assortment



#PGA07 *
\$250, \$300 as shown & \$350



#PGA06
\$250, \$300 as shown & \$350
(Appx. 20" to 24" W as shown)



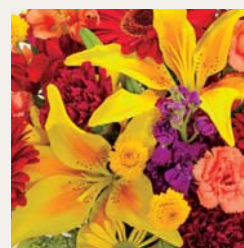
Red & White



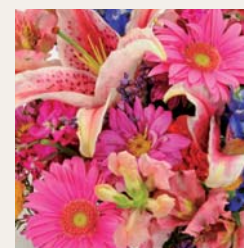
Citrus



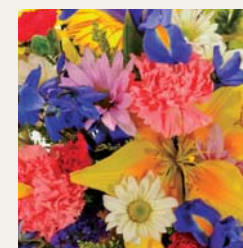
White



Bold Tones



Pink & Lavender
(Shown Above)



Spring Garden

Color Palettes

#PGA25 *
Six-Piece Setting Above
\$1,090, \$1,290 as shown & \$1,490

This setting features a premium assortment of seasonal fresh flowers such as roses, lilies, Gerbera daisies, stock, snapdragons, larkspur, daisy poms, carnations, or similar garden favorites.

* = Please indicate whether for a **cremation urn** or **framed photo**, and provide the approximate dimensions.

Some items may vary due to availability. Columns, urns, and cremation urns are NOT included, as they are normally available from the funeral provider. Applicable tax and delivery additional. Please order two to three days in advance if possible (excluding Sundays and legal holidays) and no later than eight (8) business hours prior to delivery, or a rush design and delivery surcharge will apply. Floral services by Phillip's Flowers. Photos copyright protected.

Heavenly Whites



#PHW03 *
\$275, \$325 as shown & \$375



#PHW24 *
Complete Six-Piece Setting Above
\$1,165, \$1,315 as shown & \$1,465

This setting features heavenly white blossoms, such as roses, hydrangea, larkspur, orchids, and mini calla lilies, with green Bells of Ireland, mini hydrangea, or similar seasonal fresh favorites.



#PHW04
\$400, \$450 as shown & \$500
(Appx. 20" to 22" W as shown)



#PHW05
\$400, \$450 as shown & \$500
(Appx. 20" to 22" W as shown)

* = Please indicate whether for a **cremation urn** or **framed photo**, and provide the approximate dimensions.

Some items may vary due to availability. Columns, urns, and cremation urns are NOT included, as they are normally available from the funeral provider. Applicable tax and delivery additional. Please order two to three days in advance if possible (excluding Sundays and legal holidays) and no later than eight (8) business hours prior to delivery, or a rush design and delivery surcharge will apply. Floral services by Phillip's Flowers. Photos copyright protected.

Patriotic Expression



#PPE22
\$350, \$400 as
shown & \$450
(Appx. 22" to 26"
W as shown)

#PPE21 *
\$250 as shown,
\$300 & \$350

#PPE23
\$250, \$300 as
shown & \$350

#PPE24
\$200 as shown,
\$250 & \$300

#PPE25 *
Four-Piece Setting Above
\$1,150 as shown, \$1,250 & \$1,450

This setting features roses, hydrangea, larkspur, lilies, delphinium, snapdragons, carnations, or similar seasonal blooms in a patriotic red, white, and blue color scheme to honor a life of service.

#PPE04 *
\$200, \$225 as shown & \$250



#PPE05
\$100, \$125 as shown & \$150

* = Please indicate whether for a **cremation urn** or **framed photo**, and provide the approximate dimensions.

Some items may vary due to availability. Columns, urns, and cremation urns are NOT included, as they are normally available from the funeral provider. Applicable tax and delivery additional. Please order two to three days in advance if possible (excluding Sundays and legal holidays) and no later than eight (8) business hours prior to delivery, or a rush design and delivery surcharge will apply. Floral services by Phillip's Flowers. Photos copyright protected.

Nature In Bloom



#PNB22
\$250, \$300 as
shown & \$350

#PNB21*
\$200 as shown,
\$250 & \$300

#PNB23
\$275, \$325 as
shown & \$375
(Appx. 20" to 24"
W as shown)

#PGP01
\$70

#PGP01
\$70

#PNB24 *
\$200, \$250 as shown & \$300



#PNB26 *
Five-Piece Setting Above
\$965 as shown, \$1,015 & \$1,165

This setting features a generous assortment of seasonal fresh flowers in rich autumn tones, such as roses, lilies, sunflowers, Gerbera daisies, alstroemeria, novelty poms, carnations, or similar. Some flowers will vary seasonally. For example, sunflowers are generally available mid-May through mid-November only.



#PNB16
\$200, \$250 as shown & \$300

* = Please indicate whether for a **cremation urn** or **framed photo**, and provide the approximate dimensions.

Some items may vary due to availability. Columns, urns, and cremation urns are NOT included, as they are normally available from the funeral provider. Applicable tax and delivery additional. Please order two to three days in advance if possible (excluding Sundays and legal holidays) and no later than eight (8) business hours prior to delivery, or a rush design and delivery surcharge will apply. Floral services by Phillip's Flowers. Photos copyright protected.

Serene Setting



#PSS21 *
\$150, \$175 as
shown & \$200

#PSS22
\$200, \$250 as
shown & \$300

#PSS23
\$300, \$350 as
shown & \$400

#PGP01
\$70

#PBB06
\$300, \$350 as shown & \$400
(Appx. 20" to 24" W as shown)



#PBB07 *
\$350, \$400 as shown & \$450 (for the pair)

#PSS24 *
Four-Piece Setting Above
\$720, \$845 as shown & \$970

This setting features a serene assortment of seasonal fresh blooms such as roses, hydrangea, lilies, stock, delphinium, larkspur or similar seasonal garden flowers.



Blue and White
(Shown Above)



Pink and White

Color Palettes



* = Please indicate whether for a **cremation urn** or **framed photo**, and provide the approximate dimensions.

Some items may vary due to availability. Columns, urns, and cremation urns are NOT included, as they are normally available from the funeral provider. Applicable tax and delivery additional. Please order two to three days in advance if possible (excluding Sundays and legal holidays) and no later than eight (8) business hours prior to delivery, or a rush design and delivery surcharge will apply. Floral services by Phillip's Flowers. Photos copyright protected.

Classic Carnations

#PCC23
\$200, \$250 as
shown & \$300



#PCC21 *
\$175, \$200 as
shown & \$225



#PCC22
\$350, \$400 as
shown & \$450
(Appx. 20" to 24"
W as shown)



#PCC24
\$150 as shown,
\$175 & \$200
(Style of angel may vary.)



#PCC06
\$250, \$300 as shown & \$350
(Appx. 20" to 24" W as shown)



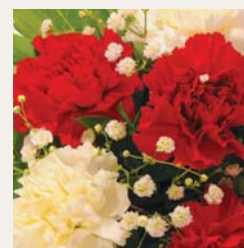
#PCC26 *
Four-Piece Setting Above
\$875, \$1,000 as shown & \$1,175



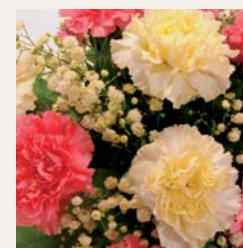
Pink



Red



Red & White



Pink & White

Color Palettes



#PCC25 *
\$200, \$250 as shown & \$300

* = Please indicate whether for a **cremation urn** or **framed photo**, and provide the approximate dimensions.

Some items may vary due to availability. Columns, urns, and cremation urns are NOT included, as they are normally available from the funeral provider. Applicable tax and delivery additional. Please order two to three days in advance if possible (excluding Sundays and legal holidays) and no later than eight (8) business hours prior to delivery, or a rush design and delivery surcharge will apply. Floral services by Phillip's Flowers. Photos copyright protected.

Celebration of Life

#PCL22
\$200, \$250 as
shown & \$300

#PCL21 *
\$200, \$250 as
shown & \$300

#PCL23
\$150, \$200 as
shown & \$250



#PCL25 *
Three-Piece Setting Above
\$550, \$700 as shown & \$850

This setting features a sunny collection of seasonal blooms such as roses, lilies, hydrangea, alstroemeria, snapdragons, Bells of Ireland, green trick dianthus, poms, or similar fresh selections to celebrate the life of any loved one.

#PCL24 *
\$200, \$250 as shown
& \$300



* = Please indicate whether for a **cremation urn** or **framed photo**, and provide the approximate dimensions.

Some items may vary due to availability. Columns, urns, and cremation urns are NOT included, as they are normally available from the funeral provider. Applicable tax and delivery additional. Please order two to three days in advance if possible (excluding Sundays and legal holidays) and no later than eight (8) business hours prior to delivery, or a rush design and delivery surcharge will apply. Floral services by Phillip's Flowers. Photos copyright protected.

Peaceful Pastels



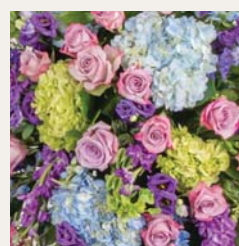
#PPP22
\$350, \$400 as
shown & \$450

#PPP21 *
\$300, \$350 as
shown & \$400

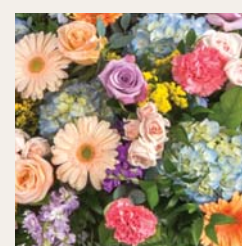
#PPP23
\$150, \$200 as
shown & \$250

#PPP24 *
Three-Piece Setting Above
\$800, \$950 as shown & \$1,100

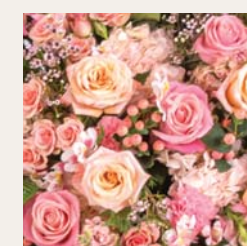
This setting features a serene assortment of seasonal fresh blooms such as roses, hydrangea, lilies, stock, delphinium, larkspur or similar garden favorites for a soothing colorful theme.



Pink, Lavender,
Lime & Blue
(Shown Above)



Pink, Peach,
Lavender & Blue



Pink & Peach

Color Palettes

* = Please indicate whether for a **cremation urn** or **framed photo**, and provide the approximate dimensions.

Some items may vary due to availability. Columns, urns, and cremation urns are NOT included, as they are normally available from the funeral provider. Applicable tax and delivery additional. Please order two to three days in advance if possible (excluding Sundays and legal holidays) and no later than eight (8) business hours prior to delivery, or a rush design and delivery surcharge will apply. Floral services by Phillip's Flowers. Photos copyright protected.

Vivid Reflections



#PVR22
\$250, \$300 as
shown & \$350

#PVR23
\$300, \$350 as
shown & \$400

#PVR21 *
\$200, \$250 as
shown & \$300

#PVR24 *
Three-Piece Setting Above
\$750, \$900 as shown & \$1,050

#PVR25 *
\$300, \$350 as shown
& \$400 (for the pair)

This striking setting features a more vivid assortment of seasonal fresh blooms, including roses, hydrangea, Gerbera daisies, gladioli, stock, carnations, or similar favorites, for a dramatic tribute of vibrant hues.



* = Please indicate whether for a **cremation urn** or **framed photo**, and provide the approximate dimensions.

Some items may vary due to availability. Columns, urns, and cremation urns are NOT included, as they are normally available from the funeral provider. Applicable tax and delivery additional. Please order two to three days in advance if possible (excluding Sundays and legal holidays) and no later than eight (8) business hours prior to delivery, or a rush design and delivery surcharge will apply. Floral services by Phillip's Flowers. Photos copyright protected.

More Urn Arrangements



#T2171 *
\$200, \$250 as shown & \$300



#T2501 *
\$200, \$250 as shown & \$300



#T2531 *
\$250, \$300 as shown & \$350



#T2532 *
\$200, \$250 as shown & \$300
Delivery Jan. 25 - Feb. 20: 20% Additional



#T2541 *
\$200, \$250 as shown & \$300
Delivery Jan. 25 - Feb. 20: 10% Additional



#T2739 *
\$175, \$200 as shown & \$225



#T2737 *
\$175, \$200 as shown & \$225



#T2551 *
\$175, \$200 as shown & \$225

* = Please indicate whether for a **cremation urn** or **framed photo**, and provide the approximate dimensions.

Some items may vary due to availability. Columns, urns, and cremation urns are NOT included, as they are normally available from the funeral provider. Applicable tax and delivery additional. Please order two to three days in advance if possible (excluding Sundays and legal holidays) and no later than eight (8) business hours prior to delivery, or a rush design and delivery surcharge will apply. Floral services by Phillip's Flowers. Photos copyright protected.



Phillip's Flowers & Gifts

Contact Information for Funeral Professionals

Phone (630) 719-5156 ▪ **Fax** (630) 719-2292

Online PhillipsFlowers.com/fd ▪ **Email** info@PhillipsFlowers.com

Phillip's

Seven Locations Serving Chicago and Suburbs. Since 1923.

Cremation Tributes

